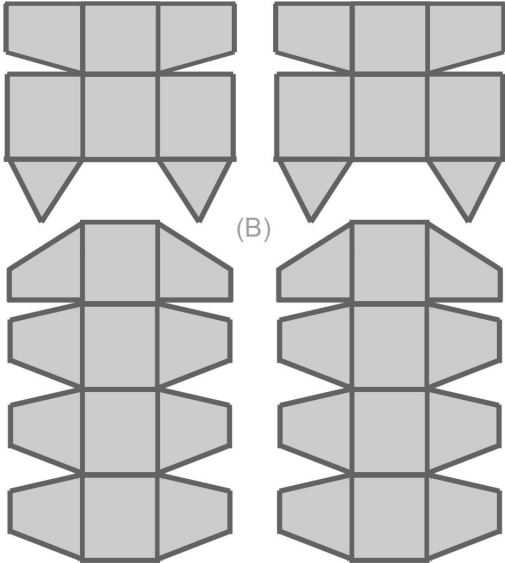


1

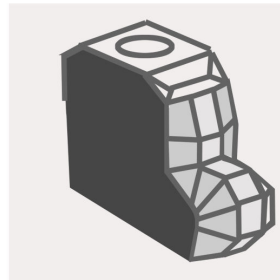
These pieces will be attached to the side of the LM. Please note the top piece and bottom piece, as well as their orientation. This will be important on the piece to construct.

(Top)



2

1) Cut the top sections along the purple lines, fold and tape the side pieces under the front piece. You may need to do some trimming. This should form a small indented section to the top of the LM. Secure to the tabs on the side.

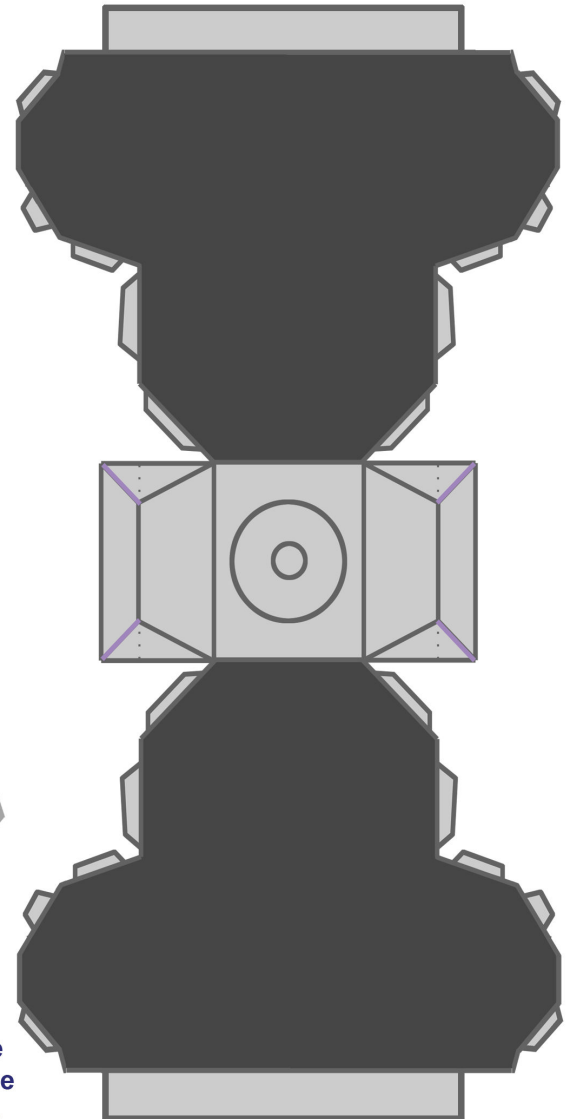
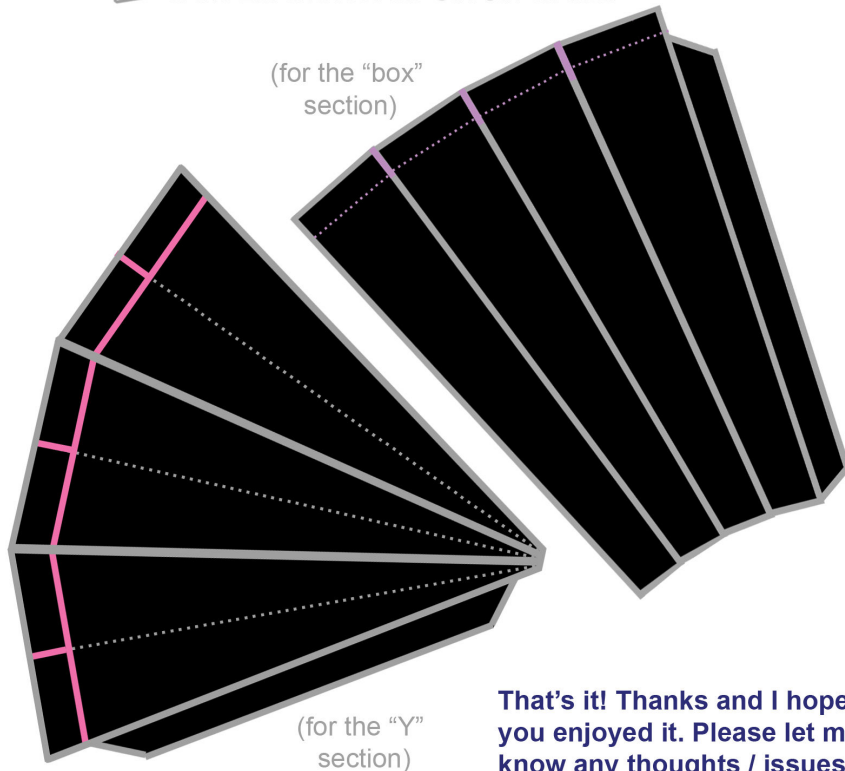


2) Secure the side panels following the contour shown in the picture. This is a big pain to do, and you will need to tape the panel gaps together to close them. Trimming may also be needed.

3) secure sections from page 6 to each side. Secure to LM bottom with the FMH side facing the ladder.

3

Fold and secure these two display posts to the diorama's base (through the bottom). Place the LM on the square post and the CM/SM on the "Y" shaped post so that they point at each other. It may help to punch a hole in the top of the LM and rest the CM/SM on that.



That's it! Thanks and I hope you enjoyed it. Please let me know any thoughts / issues you had. Marla